



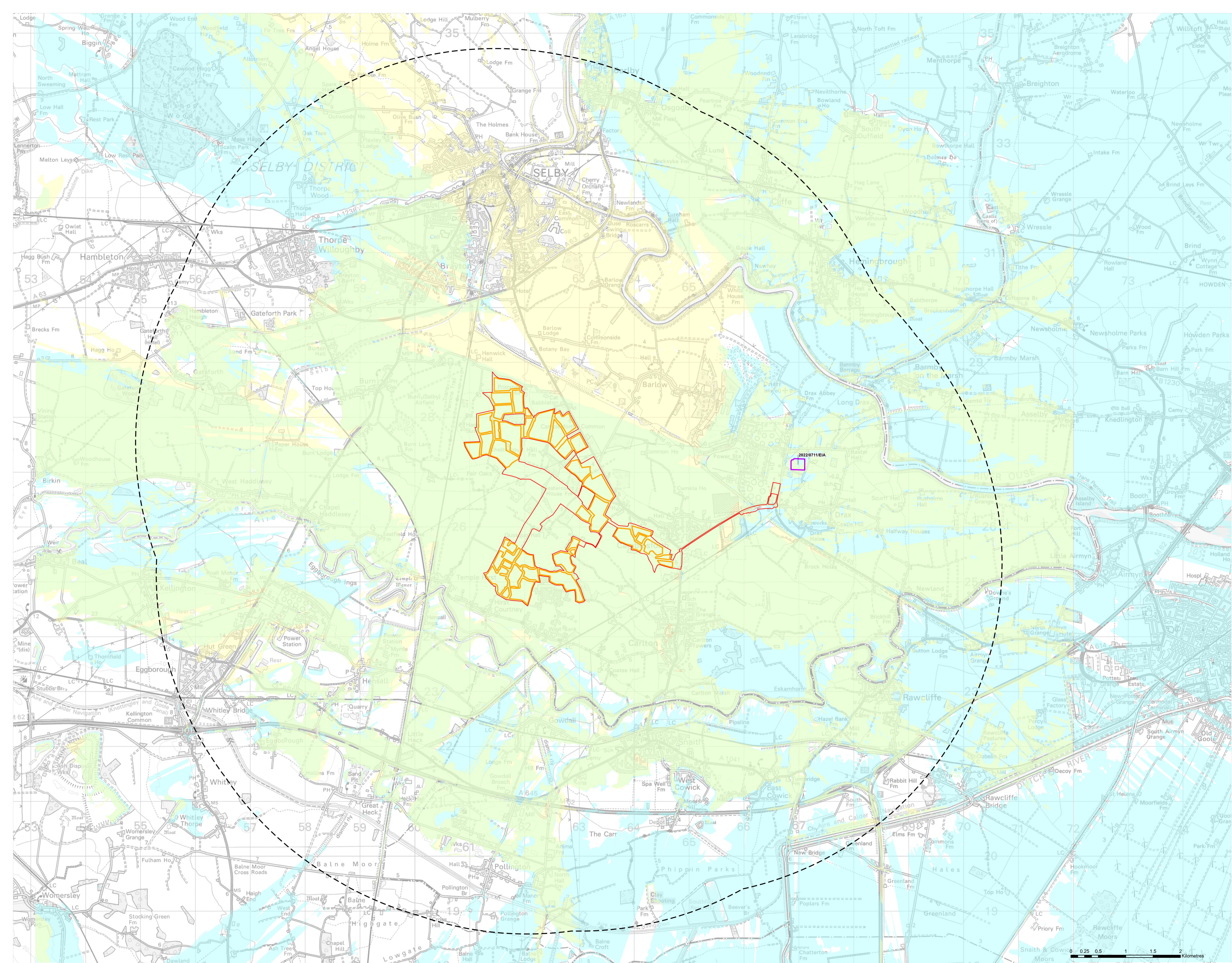
HELIOS RENEWABLE
ENERGY
PROJECT

PINS Document Number:
EN010140/APP/6.2.7.18.1

Pursuant to:
APFP Regulation 5(2)(a)

**Environmental Statement Figure 7.18.1:
Cumulative ZTV, Proposed Development
and Converter Station East of New Road,
Drax – Bare Earth**

June 2024



Key

- Site Boundary
- Helios Infrastructure
- Solar Panel Area 6 km Buffer
- Cumulative Development - Battery Containers (Ref:2022/0711/EIA)

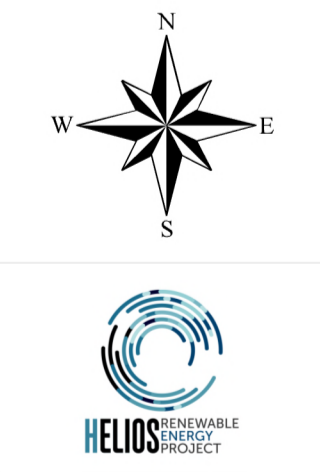
Zones of Theoretical Visibility

2022/0711/EIA - Converter Station
Helios Infrastructure

Note

The Zone of Theoretical Visibility (ZTV) has been generated using ESRI ArcGIS Spatial Analyst extension. The digital terrain model (DTM) has been derived from OS Terrain 5 dataset with an accuracy of (+/-) 1.5 - 2.5 m Root Mean Square Error (RMSE) and OS Terrain 50 dataset with an accuracy of (+/-) 4 m (RMSE). Earth curvature has been included in the ZTV calculation and refraction of light has been applied using ESRI default settings. The ZTV has been generated from a viewing height of 2 m above ground level which falls within recommendations for 'Visual Representation of Windfarms' prepared for NatureScot February 2017 - Version 2.2. The use of ZTV mapping at this stage is limited and the following assumptions should be noted:

- The Helios ZTV has been generated using a 50 m grid of the maximum developable area of the Proposed Helios Solar Farm BESS, Substation and Solar Panel areas.
- A height of 6.48 m for BESS and Substation Infrastructure and 3 m for Solar Panels has been used for generating the ZTV.
- The 2022/0711/EIA ZTV has been generated using a 50 m grid of the maximum developable area of the Converter Station.
- A height of 30 m for the Converter has been used for generating the ZTV.
- The ZTV is generated from a bare earth terrain and does not account for the screening effect of features within the landscape such as settlements and woodland. It does not indicate potential visual effects or show the likely significance of effects. It shows potential theoretical visibility only. The ZTV has been produced for the purpose of informing on the ground visual assessment.
- The Helios ZTV has been run to an area extending just beyond the solar panel area 6 km buffer.



Project Title
Helios Renewable Energy Project

Drawing Title
Figure 7.18.1 - Cumulative ZTV, Proposed Development and Converter Station East of New Road, Drax - Bare Earth

DRWS No	404-012006.00001.0013.1	Rev	1	Shr No	-
Drawn by	JK	Checked by	JRS		
Scale	1:30,000	Date	14/06/2024		